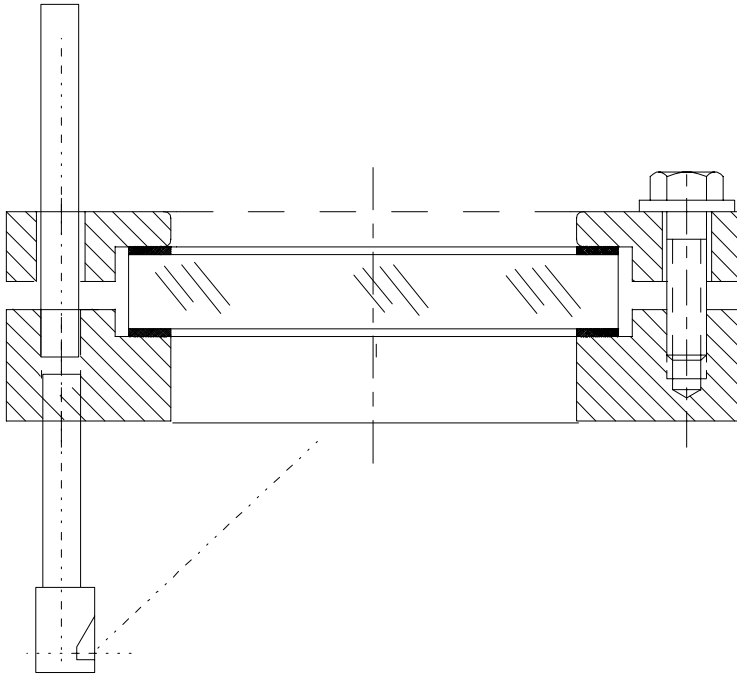




ARCHON Industries, Inc.

Spraying Units



Product Description

Instruction No.:	1022
Issued:	11/08/00
Approved:	Engg Mgr.

1.0 Application

Archon spraying units may be used for cleaning the inner face of sightglass discs via an intermittent, continuous or automatically controlled spray. They are suitable in either safe or hazardous areas for all standard sightglass ratings and may be used for both pressure and vacuum vessels subject to test certification.

2.0 Mounting

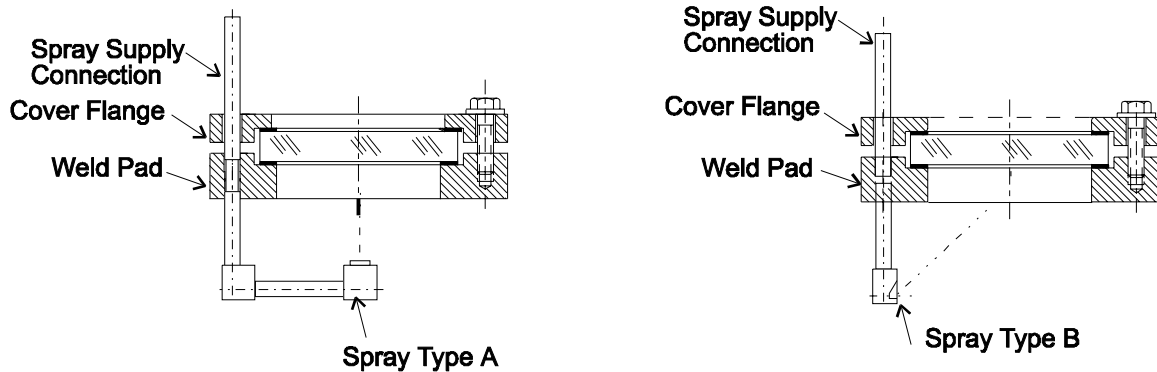
The mounting is made by means of a threaded nipple screwed into the welding flange to form a pressure tight seal and through a clearance hole in the cover flange.

3.0 Operating Conditions

These correspond to those of the sightglass fitting.

4.0 Materials

All contact parts are stainless steel.



5.0 Models

Center spray Type A assembly consists of a “street elbow”, pipe nipple and spray head.

Side spray Type B assembly consists of a pipe nipple and angled discharge spray head.

6.0 Connection

Supplying piping is routed by the customer through the 1” diameter clearance hole in the sightglass cover. The connection is made by the customer is made at a 1/ 4” NPT female hole in the welding flange. Dependent upon operating conditions, customer should provide a suitable non-return valve in the supply piping.